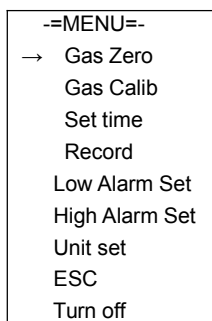
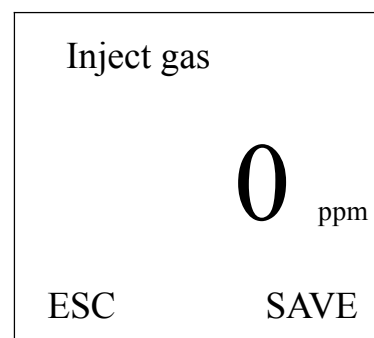
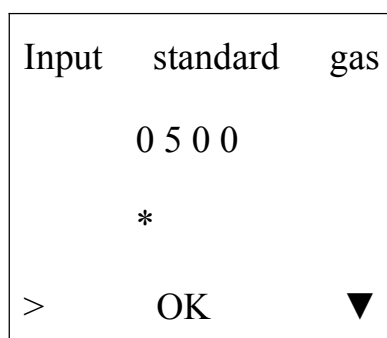
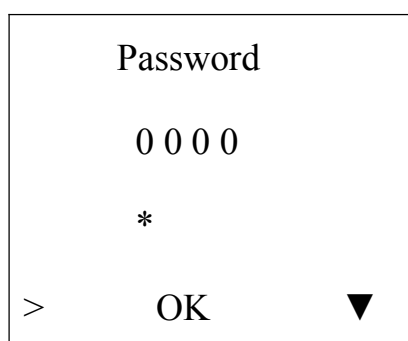


# Calibration Procedure of BH-90A

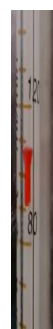
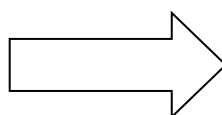
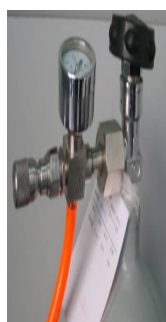
1. In the detection state, press “⊙” key, the screen displays the following screen, directly into user menu “Gas Calib”



2. Press ⊙ input “8888” password, press ⊙ into “input standard gas” For example, CO, the standard gas is 500ppm. Then press ⊙ to calibration mode.



3 Turn on the switches slowly of the gas bottle, compressor valve and flow meter in turns. When calibrating CO and H<sub>2</sub>S, the flow rate should be 200ml/min.



4. When the screen displays the calibration level, please inject the standard gas into the gas detector like the indication of the following picture. After calibration, the screen will display the calibrated gas level. Then press “▼” to save.

Inject gas

**0** ppm

ESC

SAVE

Inject gas

**500** ppm

ESC

SAVE